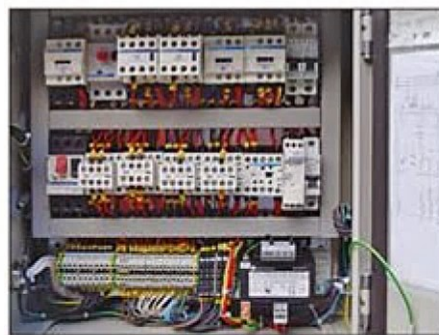


# MT SERIES



LIFTING CAPACITY kg	REEVING 2/1 – 4/2						
	TYPE	DIN 15020 FEM 9.511	LIFTING HEIGHT, m		LIFTING SPEED, m/min		
			2/1	4/2	V1	V2	V3
400	MT201	3m	6;10;14;21;28;37;42	-	8; 2/8	12; 2/12	16; 2.5/16
500	MT202	2m	6;10;14;21;28;37;42	-	8; 2/8	12; 2/12	16; 2.5/16
800	MT304	3m	6;10;13;20;27;38;42	6.5;11;15.5	8; 2/8	12; 2/12	16; 2.5/16
1 000	MT305	2m	6;10;13;20;27;38;42	6.5;11;15.5	8; 2/8	12; 2/12	16; 2.5/16
1 600	MT408	3m	5.5;9;12;20;26;34;39; 47;52;60	6;9;13	8; 2/8	12; 2/12	16; 2.5/16
2 000	MT410	2m	5.5;9;12;20;26;34;39; 47;52;60	6;9;13	8; 2/8	12; 2/12	16; 2.5/16
2 500	MT512	3m	5.5;9;12;18;25;32;38 43;49	5;8.5;12	8; 2/8	12; 2/12	16; 2.5/16
3 200	MT516	2m	5.5;9;12;18;25;32;38 43;49	5;8.5;12	8; 2/8	12; 2/12	16; 2.5/16
4 000	MT620	3m	4.5;8;11;17;23;30;35; 40;46;54;60	3.6;8.5;11; 16;18.5;22	8; 2/8	12; 2/12	16; 2.5/16
5 000	MT625	2m	4.5;8;11;17;23;30;35; 40;46;54;60	3.6;8.5;11; 16;18.5;22	8; 2/8	12; 2/12	16; 2.5/16
	MT725	4m	9;14.5;20;27;34;40.5; 46;54;60	6.5;10;13.5;17; 19.5; 23.5;26.5	8; 2/8	12; 2/12	16; 2.5/16
		3m	8;12;17;23;29;35;40; 47;52	6.5;10;13.5;17; 19.5; 23.5;26.5	8; 2/8	12; 2/12	16; 2.5/16
6 300	MT732	3m	8;12;17;23;29;35;40; 47;52	6.5;10;13.5;17; 19.5; 23.5;26.5	8; 2/8	12; 2/12	16; 2.5/16
8 000	MT I 740	3m	8;12;17;23;29;35;40; 47;52	6.5;10;13.5;17; 19.5; 23.5;26.5	8; 2/8	12; 2/12	-
8 000	MT740	2m	8;12;17;23;29;35;40; 47;52	6.5;10;13.5;17; 19.5; 23.5;26.5	8; 2/8	12; 2/12	16; 2.5/16
10 000	MT II 750	3m	8;12;17;23;29;35;40; 47;52	4.5;7.5;10.5 15.5;19.5; 22	6; 1.5/6	9; 1.5/9	-
	MT I 750	2m	8;12;17;23;29;35;40; 47;52	6.5;10;13.5;17; 19.5; 23.5;26.5	8; 2/8	12; 2/12	-
12 500	MT II 763	2m	8;12;17;23;29;35;40; 47;52	4.5;7.5;10.5 15.5;19.5; 22	6; 1.5/6	9; 1.5/9	-
16 000	MT780	1Am	8;12;17;23;29;35;40; 47;52	4.5;7.5;10.5 15.5;19.5; 22	4; 1/4	6; 1/6	-



# CATALOGUE WIRE ROPE HOISTS

## TECHNICAL DATA



LIFTING CAPACITY kg	REEVING 4/1					
	TYPE	DIN 15020 FEM 9.511	LIFTING HEIGHT, m	LIFTING SPEED, m/min		
				V1	V2	V3
1 600	MT304	3m	6.5;10;13.5	4; 1/4	6; 1/6	8; 1.25/8
2 000	MT305	2m	6.5;10;13.5	4; 1/4	6; 1/6	8; 1.25/8
3 200	MT408	3m	6;10;13	4; 1/4	6; 1/6	8; 1.25/8
4 000	MT410	2m	6;10;13	4; 1/4	6; 1/6	8; 1.25/8
5 000	MT512	3m	6;9;12.5	4; 1/4	6; 1/6	8; 1.25/8
6 300	MT516	2m	6;9;12.5	4; 1/4	6; 1/6	8; 1.25/8
8 000	MT620	3m	5.5;8.5;11.5;15;17.5;20	4; 1/4	6; 1/6	8; 1.25/8
10 000	MT625	2m	5.5;8.5;11.5;15;17.5;20	4; 1/4	6; 1/6	8; 1.25/8
	MT725	4m	10;13.5;17;20; 23; 27; 30	4; 1/4	6; 1/6	8; 1.25/8
		3m	8.5;11.5;14.5;17.5; 20; 23.5; 26	4; 1/4	6; 1/6	8; 1.25/8
12 500	MT732	3m	8.5;11.5;14.5;17.5; 20; 23.5; 26	4; 1/4	6; 1/6	8; 1.25/8
16 000	MT I 740	3m	8.5;11.5;14.5;17.5; 20; 23.5; 26	4; 1/4	6; 1/6	-
16 000	MT740	2m	8.5;11.5;14.5;17.5; 20; 23.5; 26	4; 1/4	6; 1/6	8; 1.25/8
20 000	MT II 750	3m	8.5;11.5;14.5;17.5; 20; 23.5; 26	3; 0.75/3	4.5; 1.25/4.5	-
20 000	MT I 750	2m	8.5;11.5;14.5;17.5; 20; 23.5; 26	4; 1/4	6; 1/6	-
25 000	MT II 763	2m	8.5;11.5;14.5;17.5; 20; 23.5; 26	3; 0.75/3	4.5; 1.25/4.5	-
32 000	MT780	1Am	8.5;11.5;14.5;17.5; 20; 23.5; 26	2; 0.5/2	3; 0.5/3	-

## TECHNICAL DATA - SPECIAL EXECUTIONS

LIFTING CAPACITY kg	REEVING 6/1					
	TYPE	DIN 15020 FEM 9.511	LIFTING HEIGHT, m	LIFTING SPEED, m/min		
				V1	V2	V3
25 000	MT I 740	3m	5.5; 7.5; 9.5; 11.5; 13; 15.5; 17	2.5; 0.6/2.5	4; 0.6/4	-
32 000	MT II 750	3m	5.5; 7.5; 9.5; 11.5; 13; 15.5; 17	2; 0.5/2	3; 0.5/3	-
	MT I 750	2m	5.5; 7.5; 9.5; 11.5; 13; 15.5; 17	2.5; 0.6/2.5	4; 0.6/4	-
40 000	MT II 763	2m	5.5; 7.5; 9.5; 11.5; 13; 15.5; 17	2; 0.5/2	3; 0.5/3	-
50 000	MT780	1Am	5.5; 7.5; 9.5; 11.5; 13; 15.5; 17	1.3; 0.3/1.3	2; 0.3/2	-

# CATALOGUE WIRE ROPE HOISTS

## ELECTRIC MOTOR PARAMETERS



### PARAMETERS OF THE LIFTING ELECTRIC MOTORS WITH A BUILT-IN BRAKE (400 V, 50 HZ)

Dimensions	Lifting capacity, kg	Group by FEM 9.511	Single-speed lift						Double-speed lift					
			V1		V2		V3		V1		V2		V3	
			P <sub>H</sub> , kW	I <sub>H</sub> , A	P <sub>H</sub> , kW	I <sub>H</sub> , A	P <sub>H</sub> , kW	I <sub>H</sub> , A	P <sub>H</sub> , kW	I <sub>H</sub> , A	P <sub>H</sub> , kW	I <sub>H</sub> , A	P <sub>H</sub> , kW	I <sub>H</sub> , A
MT202	500	2m	0.75	3.3	1.1	3.6	4.5	12.0	0.16/0.75	3.0/3.4	0.16/1.1	3.0/3.5	0.7/4.5	6.0/9.5
MT305	1000		1.5	5.8	2.3	6.0	4.5	12.0	0.33/1.5	3.7/5.0	0.33/2.2	3.7/6.2	0.7/4.5	6.0/9.5
MT410	2000		3.0	11.0	4.5	12.0	12.0	28.0	0.7/3.0	6.0/7.5	0.7/4.5	6.0/9.5	1.7/12.5	15.0/23.0
MT516	3200		4.5	12.3	7.5	17.0	12.0	28.0	1.0/4.8	11.0/12.0	1.0/7.5	11.0/15.0	1.7/12.5	15.0/23.0
MT625	5000		8.0	24.5	12.0	28.0	15.5	29.5	1.7/8.0	15.0/18.0	1.7/12.5	15.0/23.0	4.0/24.0	70.0/48.0
MT740	8000		12.5	36.0	22	49	22	49	3.0/13.0	40.0/30.0	4.0/24.0	70.0/48.0	4.0/24.0	70.0/48.0
MT750	10000		16	36	22	49	-	-	4.0/16	70/36	4.0/24.0	70.0/48.0	-	-
MT763	12500	16	36	22	49	-	-	4.0/16	70/36	4.0/24.0	70.0/48.0	-	-	
MT780	16000	1Am	12.5	36	22	49	-	-	3.0/13.0	40.0/30.0	4.0/24.0	70.0/48.0	-	-

### PARAMETERS OF THE ELECTRIC MOTORS WITH A BUILT-IN BRAKE FOR MONORAIL HOIST RUNNING GEARS (400 V, 50 HZ)

Dimensions	Lifting capacity, kg		Group by FEM 9.511	Lifting height, m		Conveying speed, m/min					
						8, 10, 12, 20		15, 32		4/12, 5/15, 6.5/20, 10/32*	
	2/1	4/1		2/1	4/1	P <sub>H</sub> , kW	I <sub>H</sub> , A	P <sub>H</sub> , kW	I <sub>H</sub> , A	P <sub>H</sub> , kW	I <sub>H</sub> , A
MT202	500	-	2m	6, 10, 14	-	0.12	0.82	0.18	0.75	0.06/0.18	1.4/1.2
MT305	1000	-		6, 10, 13	-						
	-	2000		-	6.5						
MT410	2000	4000		5.5, 9, 12	6	0.25	1.2	0.37	1.5	0.11/0.37	1.7/1.4
MT516	3200	-		5.5, 9, 12	-						
	-	6300		-	6	0.37	1.8	0.55	2.1	0.11/0.37	1.7/1.4
MT625	5000	-	4.5, 8, 11	-							

\* exceptional for MT 516 (4x1) and MT625

Dimensions	Lifting capacity, kg		Group by FEM 9.511	Lifting height, m		Conveying speed, m/min					
						8, 10, 12, 20		15, 32		4/12, 5/15, 6.5/20, 10/32*	
	2/1	4/1		2/1	4/1	P <sub>H</sub> , kW	I <sub>H</sub> , A	P <sub>H</sub> , kW	I <sub>H</sub> , A	P <sub>H</sub> , kW	I <sub>H</sub> , A
MT202	500	-	2m	21, 28, 37, 42	-	2x0.12	0.82	2x0.18	0.75	2x0.06/0.18	1.4/1.2
MT305	1000	-		20, 27, 38, 42	-						
	-	2000		-	10, 13.5						
MT410	2000	4000		20, 26, 34, 39 47, 52, 60	10, 13	2x0.25	1.2	2x0.37	1.5	2x0.11/0.37	1.7/1.4
MT516	3200	6300		18, 25, 32 38, 43, 49	9, 12.5						
MT625	5000	-		17, 23, 30, 35 40, 46, 54, 60	-	2x0.37	1.8	2x0.55	2.1	2x0.11/0.37	1.7/1.4
		-		10000	-						
MT740	8000	-		8, 12, 17, 23, 29 35, 40, 47, 52	-	2x0.37	1.8	2x0.55	2.1	2x0.11/0.37	1.7/1.4
MT750	10000	-									
MT763	12500	-									

\* exceptional for MT625 (4/1) and MT740, MT750 and MT763